

STUDENT ACCOMMODATION BRISBANE

Unilodge



UniLodge @ Shafston is a 12 storey building with secure swipe card access to individual floors featuring 170 individual studio apartments. Each apartment has its own bathroom and kitchenette and the layout makes all rooms suitable for individuals, couples or friends wishing to share. All of the apartments are fully furnished and equipped for student living. Other apartment features include free internet with wifi, river and city views, some with balconies, and air-conditioning (extra charges applies). The property also boasts a café on the ground floor, a large modern resident's gym, coin operated laundry and a resident's common area which includes a large screen TV. Students love living here!

The property is only 3.5kms away from the CBD which you can access via a short and free ferry city hopper ride. The free ferry service runs every half hour from Dock side to the Eagle Street City stop (10 minutes' walk to Kaplan International English). You can also take the bus directly to Kaplan International English and it would take you less than 30 min travel time.



Unilodge



Shaftson

9-19 Castlebar Street
Kangaroo Point, QLD 4169
Australia

Accommodation details



Single apartment



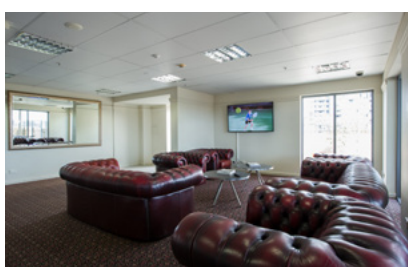
Kitchenette



Twin apartment



Laundry



Common area



Gym

Type of accommodation

Single & twin-share or double student apartments.

Meals

Meals are not provided.

Kitchen

Each room contains a kitchenette with a fridge, microwave, cooktop, toaster, kettle, cooking utensils and crockery. There is no shared kitchen.

Rooms

All rooms have a bed, study desk and chair, desk light, ceiling fan, wardrobe, TV, bin and blinds. Some apartments have a balcony and air conditioning.

Bathrooms

Ensuite bathroom in each apartment.

Utilities

Electricity and water are included in the accommodation fee. Electrical current is 240 volts AC. Some students may require an adaptor.

Internet and phone

Ethernet port in all rooms. 8GB free per week

Laundry and cleaning

Coin-operated washing machines and dryers are available for student use. Rooms and linen are cleaned weekly.

Bed linen and towels

Bed linen and towels are included in each bedroom.

Security and keys

Secure building, 24 hour security monitoring and live in manager, swipe card access to entrance, lifts and key access to all units. Lost or stolen room keys and security cards will result in a fee (\$350.00 AUD).

Deposit

A copy of your credit card and passport is taken as security for each student upon arrival. A one-off cleaning fee of \$50 is due on arrival.

Visitors

Visitors are not permitted in rooms after 10pm.

Noise and Restrictions

Students are requested to keep noise levels to a minimum after 10 pm. There is no alcohol to be stored or consumed in common areas at any time.

Availability

Available all year round. Bookings are to be made with your Kaplan representative

Payment Terms

Minimum 4 weeks booking. Full payment is required 2 weeks prior to student arrival date.

Cancellation Policy

2 weeks' notice period given in writing and a \$60 administration fee applies to any cancellation or shortening of original booking

Arrival and departure

Daily from 12:00pm. After-hours check-ins are available after 5pm Mon-Fri and after 12pm Sat, Sun and public holidays.